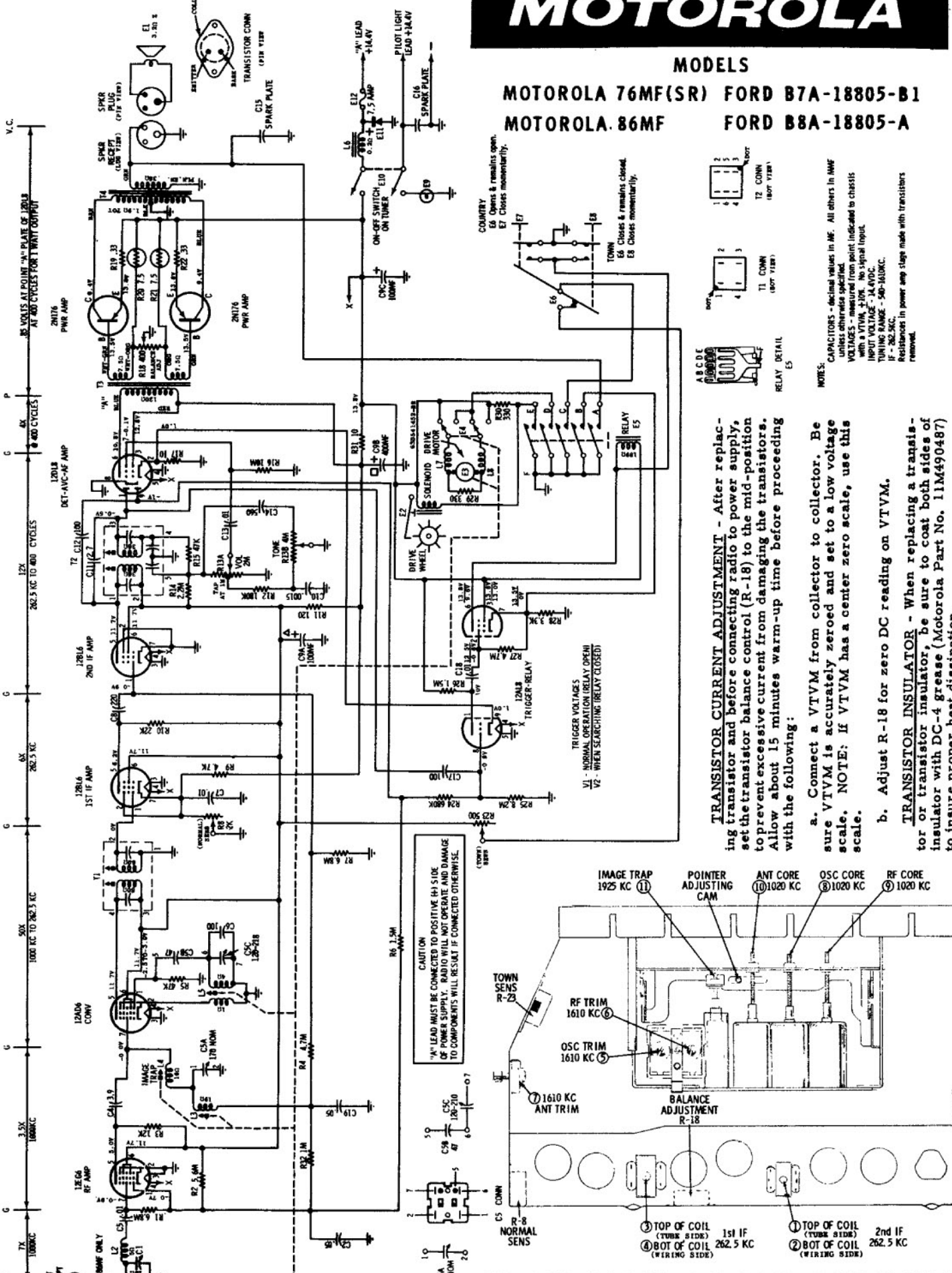


## MODELS

MOTOROLA 76MF(SR) FORD B7A-18805-B1

MOTOROLA 86MF FORD B8A-18805-A

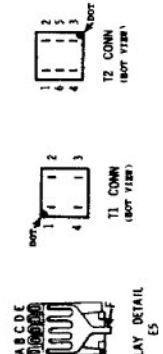


**TRANSISTOR CURRENT ADJUSTMENT** - After replacing transistor and before connecting radio to power supply, set the transistor balance control (R-18) to the mid-position to prevent excessive current from damaging the transistors. Allow about 15 minutes warm-up time before proceeding with the following:

- Connect a VTVM from collector to collector. Be sure VTVM is accurately zeroed and set to a low voltage scale. NOTE: If VTVM has a center zero scale, use this scale.
  - Adjust R-18 for zero DC reading on VTVM.
- TRANSISTOR INSULATOR** - When replacing a transistor or transistor insulator, be sure to coat both sides of insulator with DC-4 grease (Motorola Part No. 11M490487) to insure proper heat dissipation.

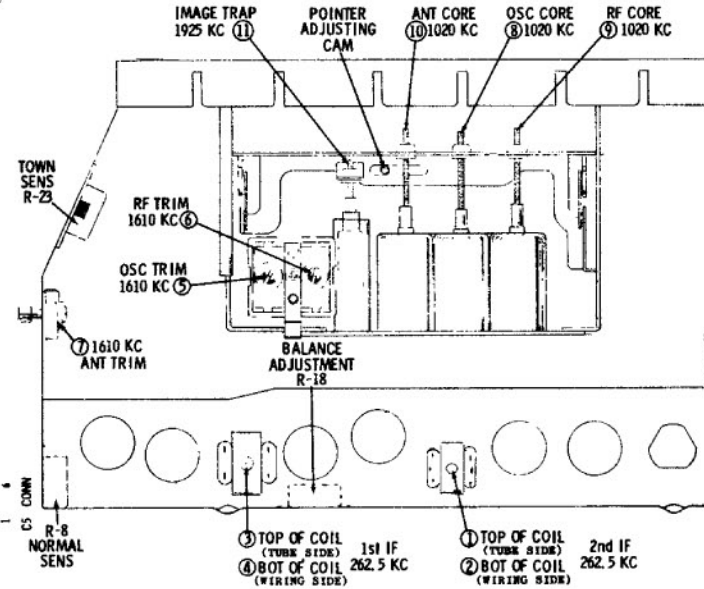
COUNTRY  
E5 Opens & remains open.  
E7 Closes momentarily.

TOWN  
E6 Closes & remains closed.  
E8 Closes momentarily.



NOTES:  
CAPACITORS - decimal values in  $\mu F$ . All others in MFD unless otherwise specified.  
VOLTAGES - measured from point indicated to chassis with a VTVM,  $\pm 10\%$ . No signal input.  
INPUT VOLTAGE - 14.4VDC.  
TUNING RANGE - 540-1600 KC.  
IF - 82.5 KC.  
Resistance in power amp stage made with transistors removed.

CAUTION  
"A" LEAD MUST BE CONNECTED TO POSITIVE (+) SIDE OF POWER SUPPLY. RADIO WILL NOT OPERATE AND DAMAGE TO COMPONENTS WILL RESULT IF CONNECTED OTHERWISE.



MODELS 76MF(SR) & 86MF ALIGNMENT POINT LOCATION DETAIL